

Jiggly Greenhouse Step by Step Install



1. Lay Out Arched Frame



2. Mark 6" Up On Both Ends



3. Confirm 6" Marks On Support Post



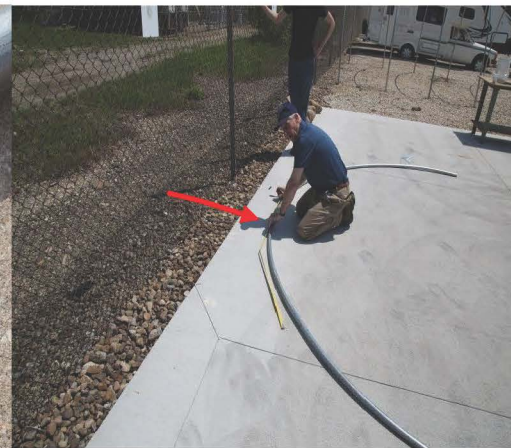
4. Connect Swedge Ends Together



5. Use Tek Screw To Join Ends



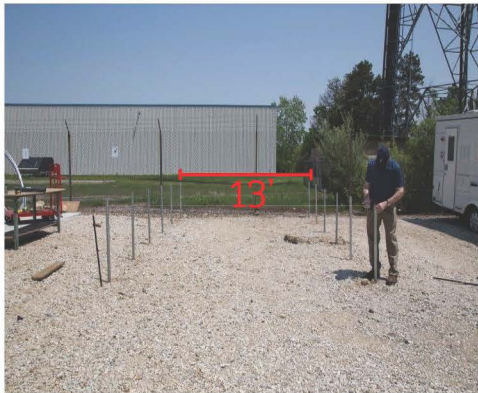
6. Confirm Connected Ends Are Secure



7. Find Center Of Arch And Add Mark



8. Measure & Line Up Support Posts 4' On Center



9. Measure Width Of Support Posts To 13'



10. Pound Support Posts In Ground With Pipe Pounder & Sledge



11. Slide Hoop In Support Post To 6" Mark & Connect Using Tek Screw

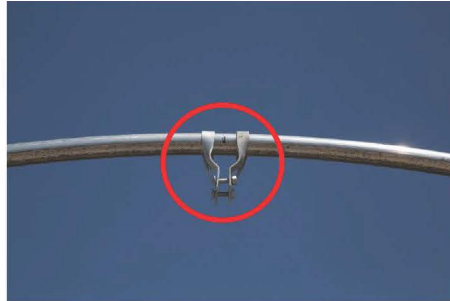


12. Attach The Rest Of The Hoops To Support Posts

Jiggly Greenhouse Step by Step Install



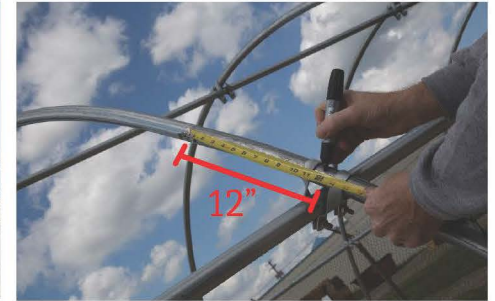
13. Attach Top Wood Adapter Brackets



14. Attach Purlin Brackets To Center Of Purlin (Marked In Step 7)



15. Connect Top Center Brace



16. Install Side Braces 12" From Top Of 5' 2" Arch Frame



17. Finish Installing Side Braces For Both Sides



18. Use Pole Strap For Ends Of Side Purlin



19. Cut Off Excess & Insert End Plug



20. Attach Bottom Wood Adapter Brackets



21. Attach Wooden Side Rails



22. Screw Side Rails Into End Post

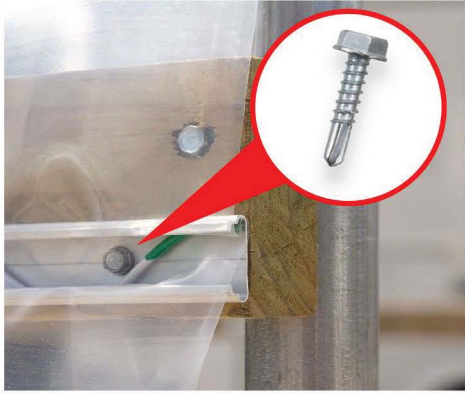


23. Finish Attaching Side Rails On Top & Bottom For Both Sides

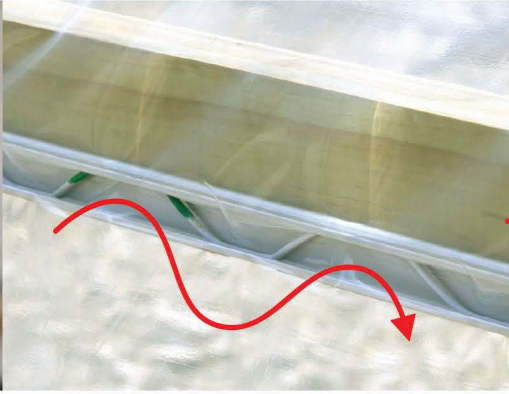


24. Make Sure Side Rails Are Level

Jiggly Greenhouse Step by Step Install



25. Install Jiggly Wire Channel To Top Side Rail Using Tek Screws



26. Cover Hoophouse In Grow Film And Attach To Side Rail Using Jiggly Wire



27. Ensure Grow Film Is Evenly Taut



Call Us at (888) 378-1049 Toll Free or (330) 650-9226 Local

Email: sales@jigglygreenhouse.com

